
Intervening
with
Systems to
Create
Sustainable
Change

GENDER-BASED VIOLENCE SUMMIT

MARCH 29, 2023

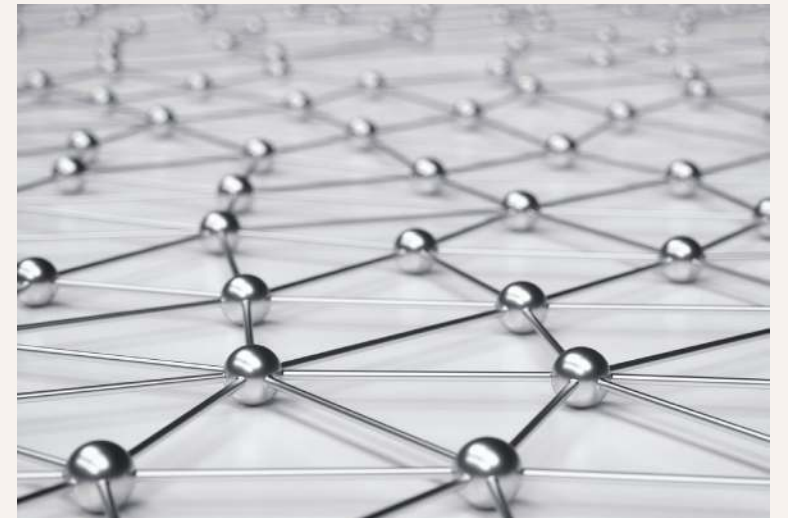
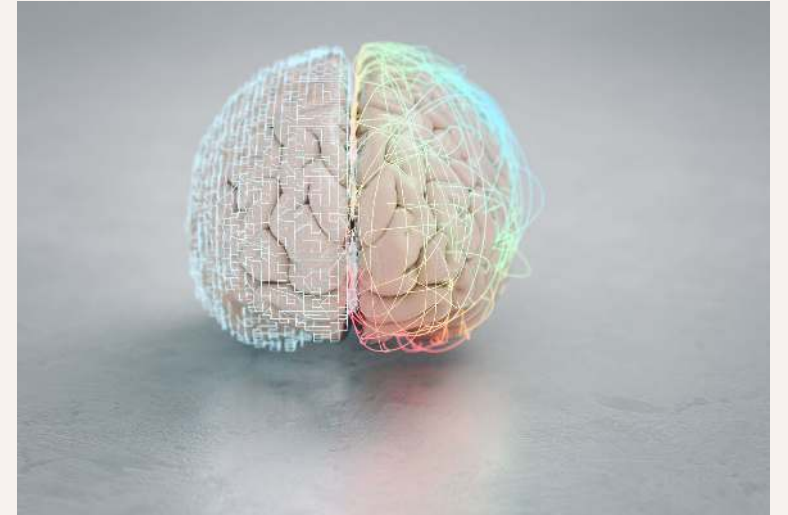


What do we mean
by systems change?



“Confronting root causes of issues (rather than symptoms) by transforming structures, customs, mindsets, power dynamics and policies, strengthening collective power through the active collaboration of diverse people and organizations.”

Catalyst 2030



Why systems change?



Does your organization engage in systems change?

Tell your neighbour!



Research, Relationships, Reputation, Results

Identify
need

Gather
data

Build
relation-
ships

Enlist
support

Take
action

Evaluate
outcom
e

PATHS Intervention in the Legal System

- PATHS' member agencies identified need
- Approached related funder → Saskatchewan Law Foundation
- Assembled working group of policy level individuals (Ministries of Justice and Social Services, law enforcement, mediators and lawyers)
- Developed recommendations AND
 - Built relationships among siloed groups
 - Led to involvement with Clare's Law
 - Led to request for training for lawyers and mediators
 - Led to expert witness project
 - Led to Intervention
 - Led to invitation to speak to judges



What do you need to know?

- Who has jurisdiction over the system you would like to change?
- What data is present to provide rationale for the change you



What resources do you have (time/people/skills/budget/relationships)




What tools will you use? (meetings with officials, letter writing, petitions, media, social media)



Who else can be involved? (individuals and groups aligned with your cause)

Table Activity

As a group pick one needed system change to focus on.



Using the following as a guideline draw a chart outlining the steps needed to impact systems change. Be creative! Both images and words can be incorporated.



identify need → gather data → build relationships → enlist support → take action → evaluate outcome

Reflections

Every action we take, as an individual or an organization has a ripple effect.

How does your work lead to systemic change?



Contact Information

Jo-Anne Dusel, Executive Director

paths@sasktel.net

Crystal Giesbrecht, Director of Research and Communications

paths.research@sasktel.net

www.pathssk.org



paths_sk



pathssask



pathssk

